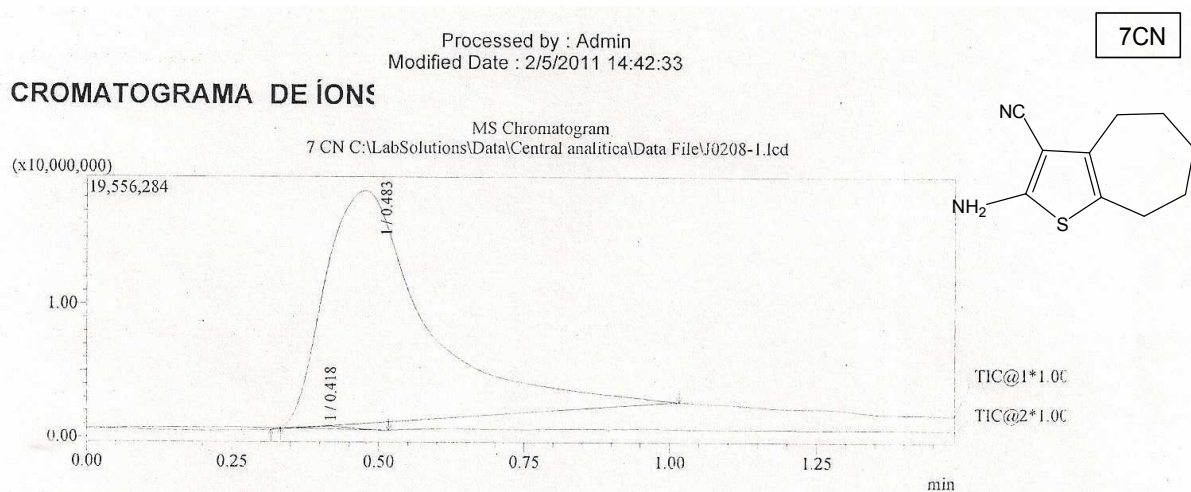
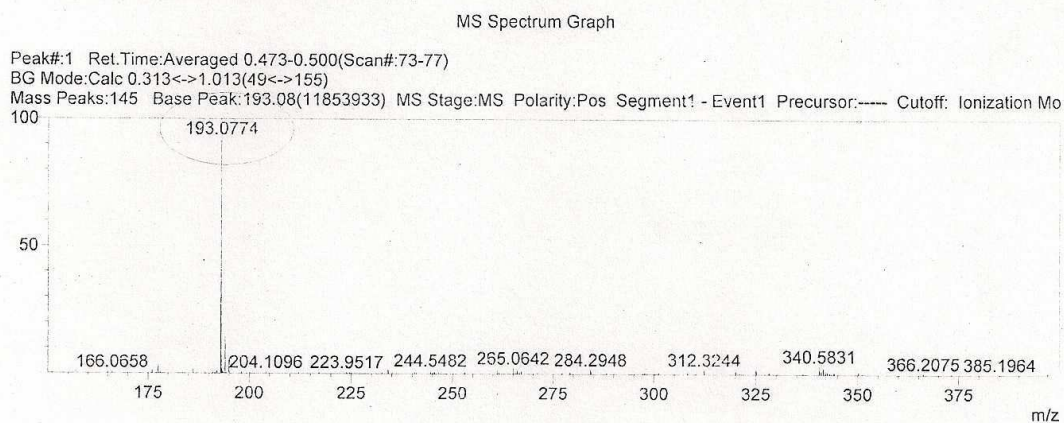


## ANEXO D – ESPECTROS DE MASSA



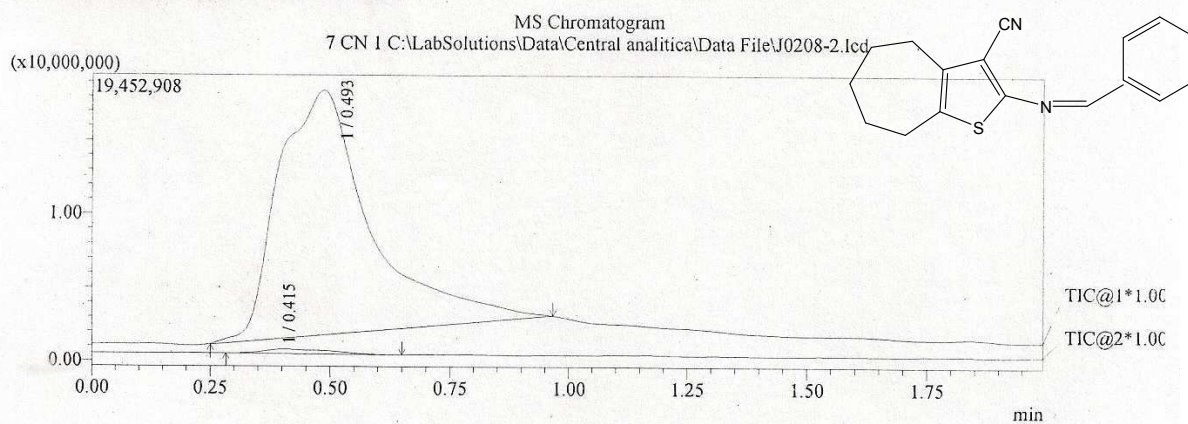
## ESPECTRO DE MASSAS



Processed by : Admin  
Modified Date : 2/5/2011 14:45:10

7CN01

## CROMATOGRAMA DE IONES



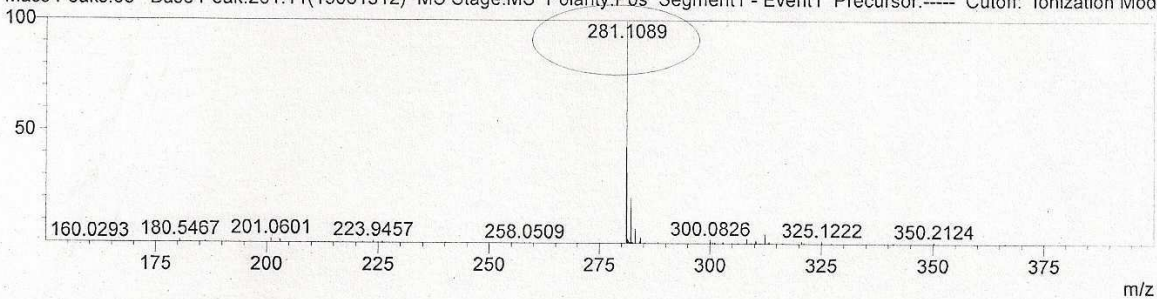
## ESPECTRO DE MASSAS

MS Spectrum Graph

Peak#:1 Ret.Time:Averaged 0.473-0.500(Scan#:73-77)

BG Mode:Calc 0.247<->0.960(39<->147)

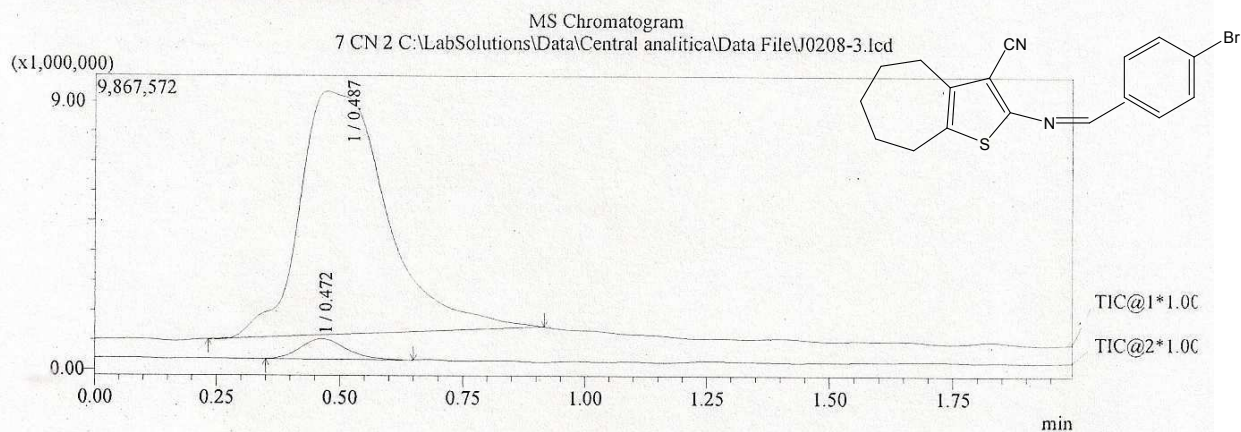
Mass Peaks:88 Base Peak:281.11(13061312) MS Stage:MS Polarity:Pos Segment1 - Event1 Precursor:---- Cutoff: Ionization Mod



Processed by : Admin  
Modified Date : 2/5/2011 14:47:42

7CN02

## CROMATOGRAMA DE IONES



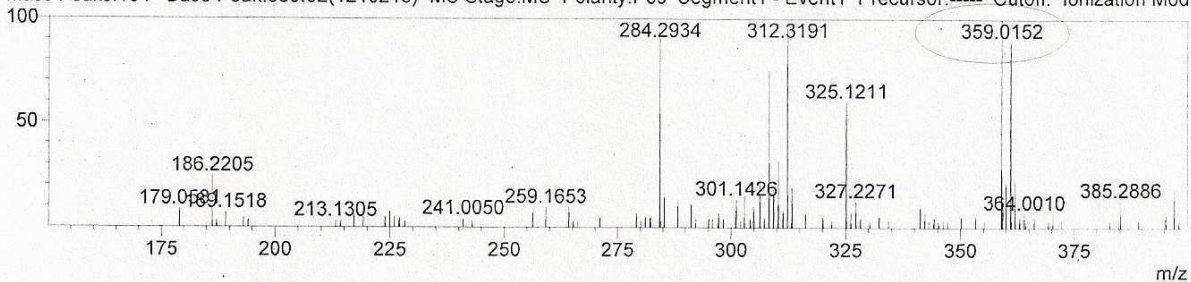
## ESPECTRO DE MASA S

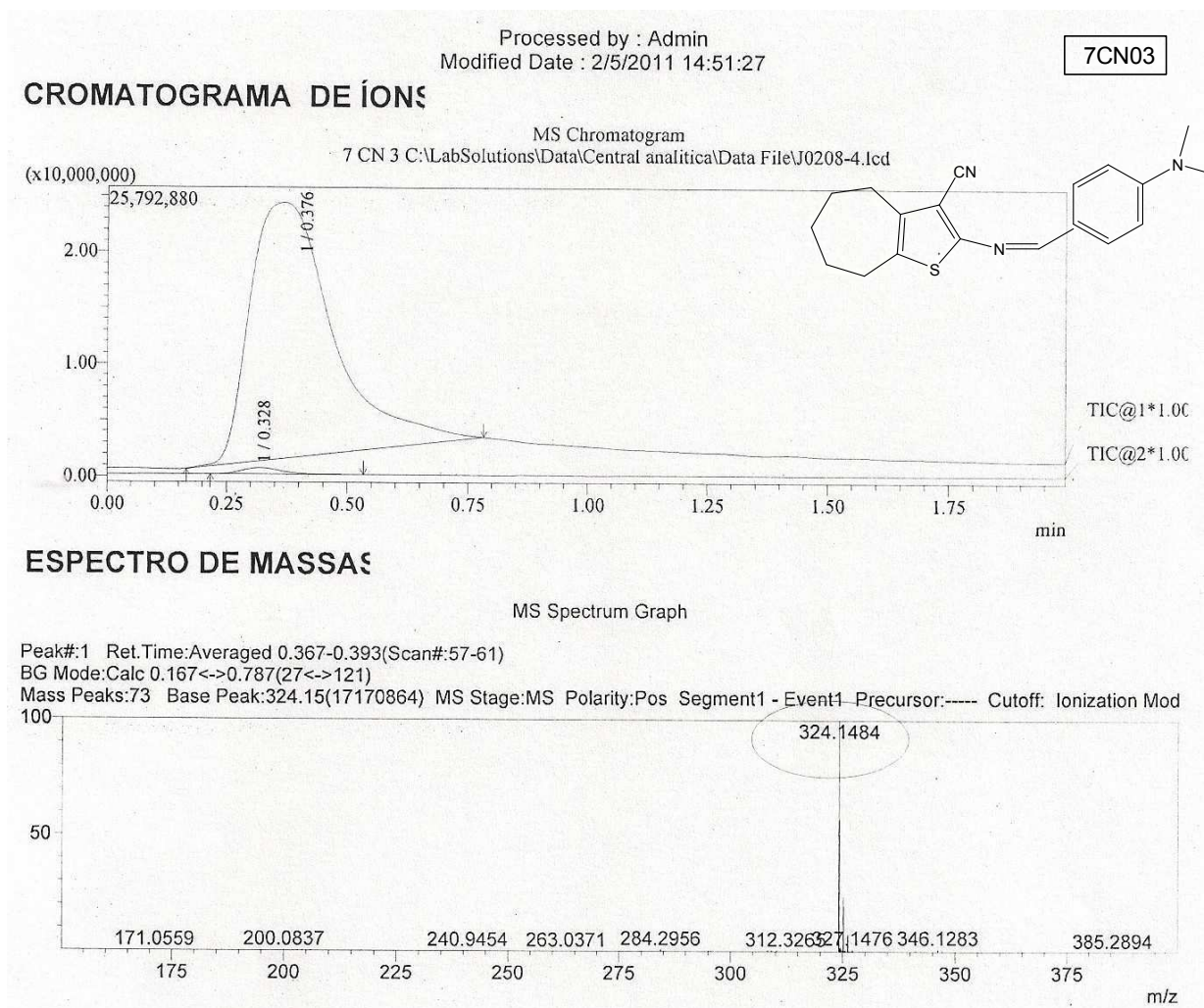
MS Spectrum Graph

Ret. Time: 0.447 (Scan#: 69)

BG Mode: Calc 0.233 <-> 0.920 (37 <-> 141)

Mass Peaks: 104 Base Peak: 359.02 (1210213) MS Stage: MS Polarity: Pos Segment1 - Event1 Precursor: ----- Cutoff: Ionization Mod

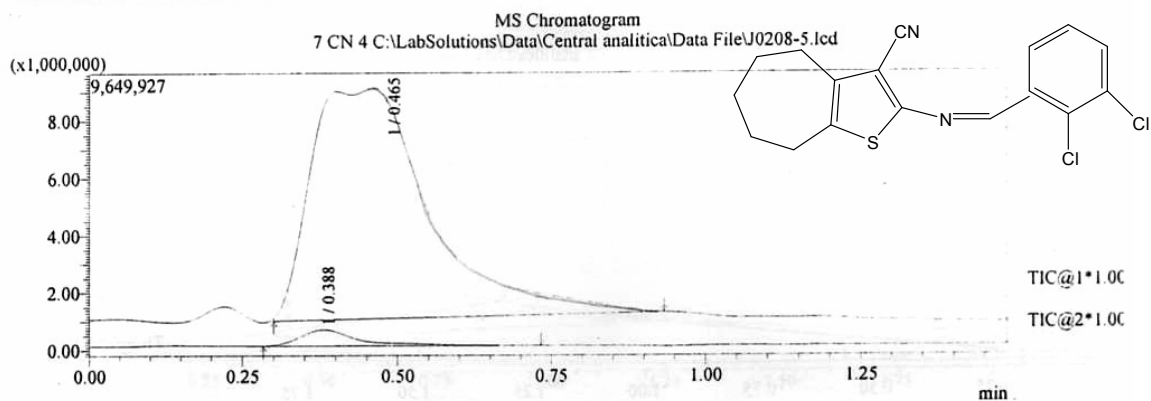




Processed by : Admin  
Modified Date : 2/5/2011 14:53:38

7CN04

### CROMATOGRAMA DE IONES



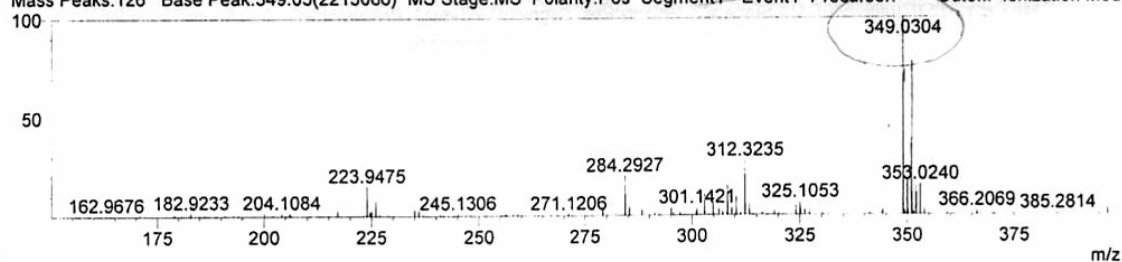
### ESPECTRO DE MASA

MS Spectrum Graph

Peak#:1 Ret.Time:Averaged 0.447-0.473(Scan#:69-73)

BG Mode:Calc 0.300<->0.933(47<->143)

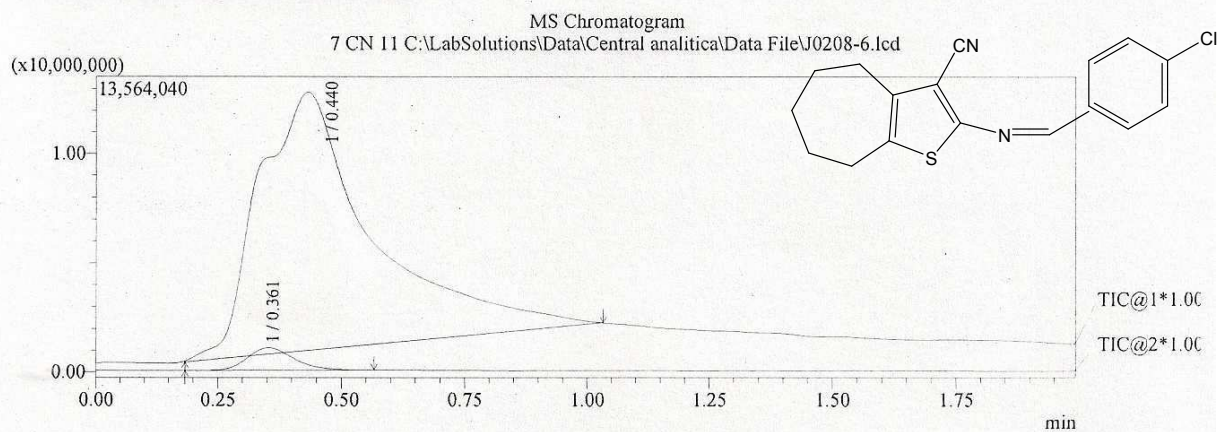
Mass Peaks:126 Base Peak:349.03(2215086) MS Stage:MS Polarity:Pos Segment1 - Event1 Precursor: Cutoff: Ionization Mod



Processed by : Admin  
Modified Date : 2/5/2011 15:04:13

7CN11

## CROMATOGRAMA DE IONES



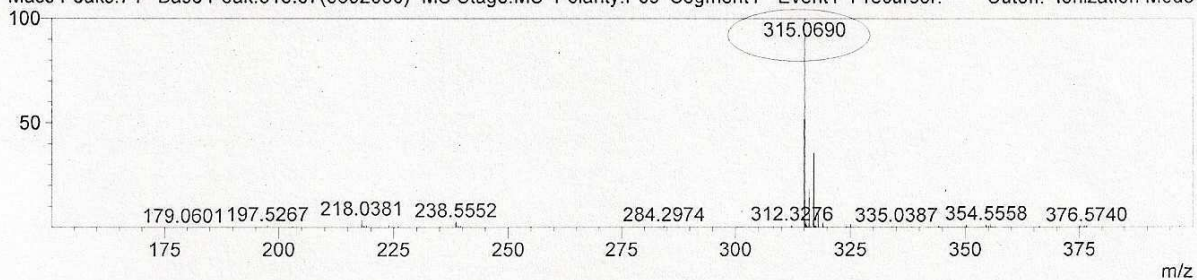
## ESPECTRO DE MASSAS

MS Spectrum Graph

Peak#:1 Ret.Time:Averaged 0.433-0.460(Scan#:67-71)

BG Mode:Calc 0.180<->1.027(29<->157)

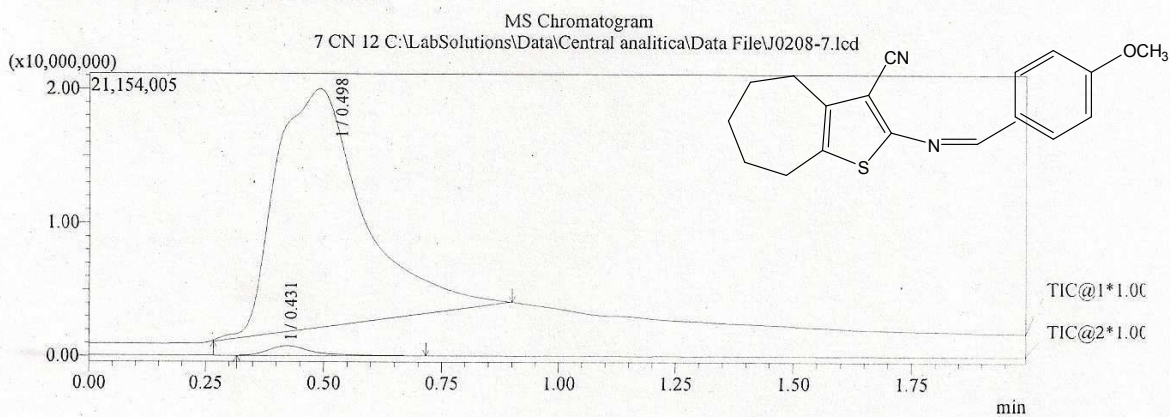
Mass Peaks:74 Base Peak:315.07(6692680) MS Stage:MS Polarity:Pos Segment1 - Event1 Precursor:---- Cutoff: Ionization Mode



Processed by : Admin  
Modified Date : 2/5/2011 15:06:44

7CN12

### CROMATOGRAMA DE IONES



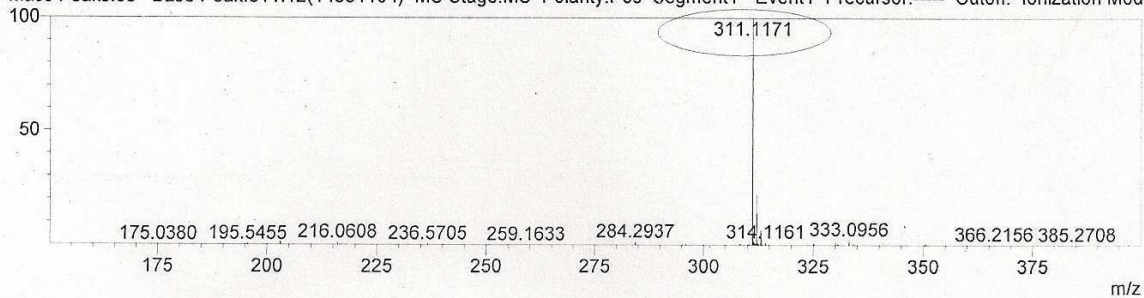
### ESPECTRO DE MASSAS

MS Spectrum Graph

Peak#:1 Ret.Time:Averaged 0.487-0.513(Scan#:75-79)

BG Mode:Calc 0.260<->0.893(41<->137)

Mass Peaks:63 Base Peak:311.12(14351104) MS Stage:MS Polarity:Pos Segment1 - Event1 Precursor:---- Cutoff: Ionization Mod

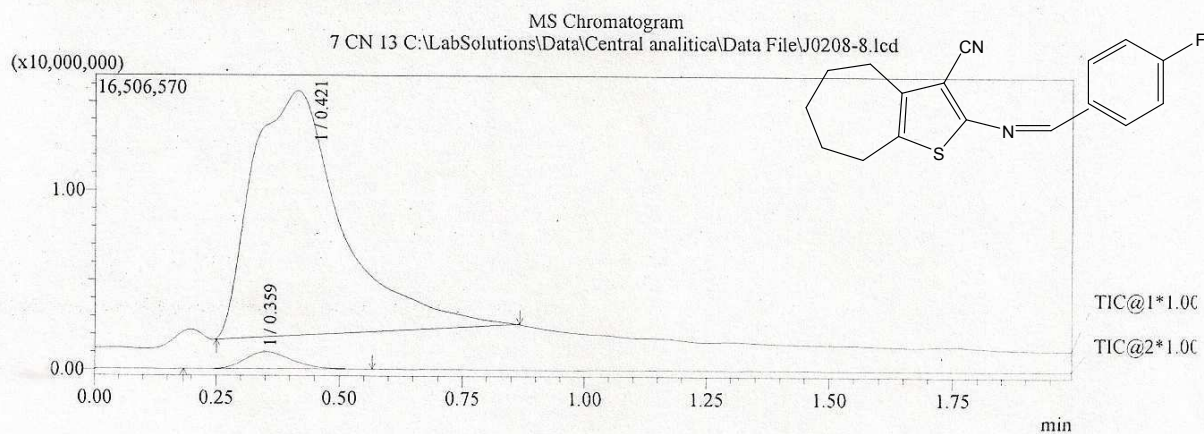




Processed by : Admin  
Modified Date : 2/5/2011 15:09:25

7CN13

## CROMATOGRAMA DE IONES



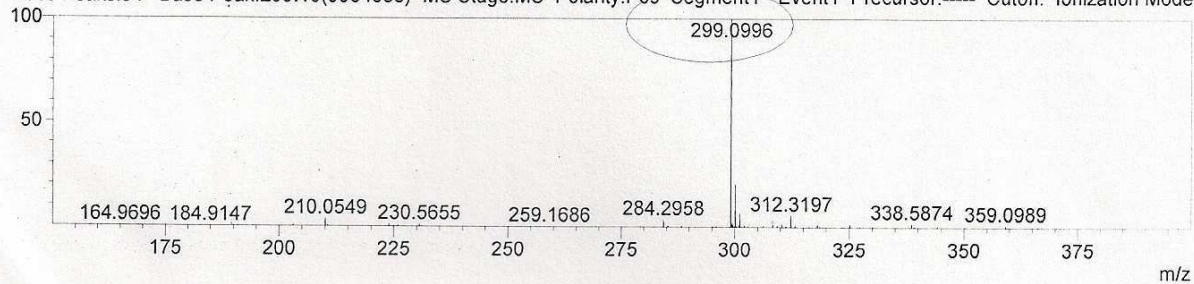
## ESPECTRO DE MASA

MS Spectrum Graph

Peak#:1 Ret.Time:Averaged 0.407-0.433(Scan#:63-67)

BG Mode:Calc 0.247<->0.867(39<->133)

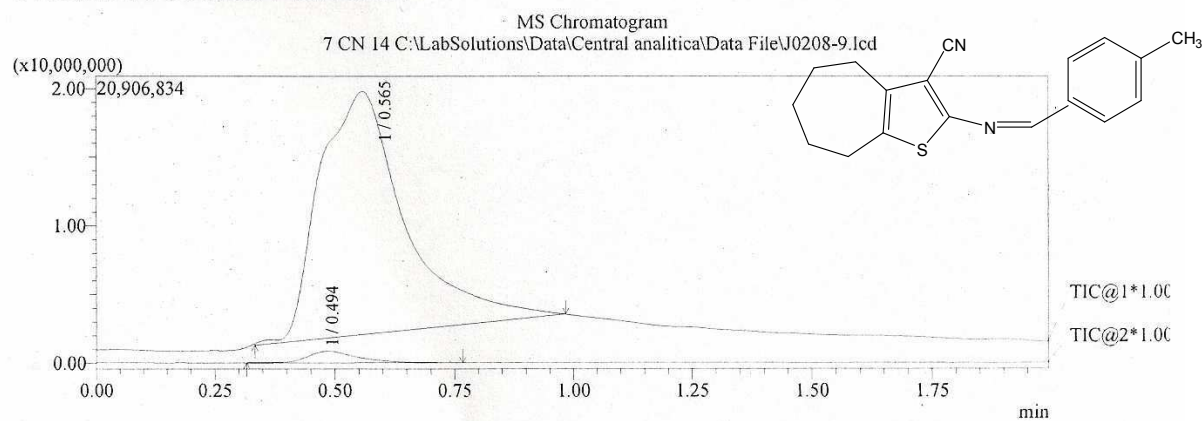
Mass Peaks:94 Base Peak:299.10(9964583) MS Stage:MS Polarity:Pos Segment1 - Event1 Precursor:---- Cutoff: Ionization Mode



Processed by : Admin  
Modified Date : 2/5/2011 15:11:59

7CN14

## CROMATOGRAMA DE IONES



## ESPECTRO DE MASSAS

MS Spectrum Graph

Peak#:1 Ret.Time:Averaged 0.553-0.580(Scan#:85-89)

BG Mode:Calc 0.327&lt;-&gt;0.987(51&lt;-&gt;151)

Mass Peaks:65 Base Peak:295.12(14022287) MS Stage:MS Polarity:Pos-Segment1 - Event1 Precursor:---- Cutoff: Ionization Mod 100

